

UP-20 UP-21MD UP-D23MD



As the size of medical imaging equipment such as endoscopy and ultrasound get smaller, printers that are used alongside such equipment also need to be compact. The UP-20, UP-21MD and UP-D23MD have been designed for medical applications where you're short on space, but need high quality prints, fast.

Analogue/Digital Colour Video Printers

The compact design of these printers means that they are easily integrated thus freeing-up space on medical carts in compliance with medical regulations. They are also easy to maintain and set up, thanks to their front-loading operation.

The UP-20 and UP-21MD are analogue colour printers with versatile inputs and outputs, while the UP-D23MD is a digital colour printer featuring a USB interface which allows direct control from a PC. All three models use Sony dye sublimation printing technology which provides photo-realistic quality prints and outstanding colour reproduction. High-resolution, near A6-size prints can be produced in under 20 seconds.*

The UP-20, UP-21MD and UP-D23MD are ideal for a wide range of medical and scientific disciplines where you may be limited for space but can't afford to compromise on quality or speed.

* See specifications table for printing times of each model/print media

MAIN FEATURES

- **PHOTO-REALISTIC QUALITY**
A6 prints with Sony dye sublimation printing technology (more than 16 million colours)
- **SUPERB PRINT QUALITY** (403 dpi)
- **HIGH-SPEED PRINTING**
- **FRAME MEMORIES**
The printer can print one image while simultaneously storing additional images
- **SLIM AND COMPACT DESIGN**
- **EASY TO USE**
- **FRONT-LOADING OPERATION**
For extra convenience and accessibility
- **WORLDWIDE AC POWER SUPPLY**
100 V to 120 V, 220 V to 240 V
- **COMPLIES WITH MEDICAL REGULATIONS**
- **LOW-COST PRINT MEDIA**
- **EXCELLENT PRICE-PERFORMANCE RATIO**

UP-20

- High-speed printing time of approximately 17 seconds (high-speed mode with the UPC-21S print media)
- RS-232C port for operation from external equipment
- Convenient remote control capability
- Hands-free control of printer functions with the optional FS-20 foot switch
- Versatile analogue video inputs and outputs (Composite Video, S-Video)
- 2 or 4-split image print mode
- 4 frame memories

UP-21MD

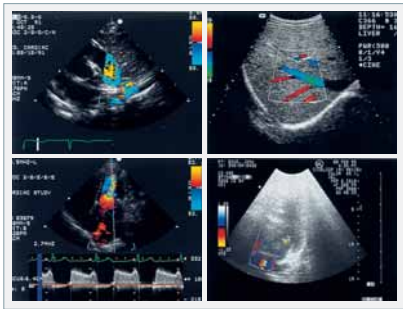
- High-speed printing time of approximately 17 seconds (high-speed mode with the UPC-21S print media)
- Proven PQC (Picture Quality Control) technology provides highly accurate image reproduction
- Colour adjustment function: easy selection of the colour most closely matching requirements
- RS-232C port for operation from external equipment
- Convenient remote control capability
- Hands-free control of printer functions with the optional FS-20 foot switch
- Versatile analogue video inputs and outputs (RGB, Composite Video, S-Video)
- 2 or 4-split image print mode
- 4 frame memories
- Monitor loop-through for system power saving

UP-D23MD

- High-speed printing time of approximately 19 seconds (high-speed mode with the UPC-21S print media)
- USB interface (version 2.0) for easy hook up with digital systems
- Resize-to-fit feature allows user to enlarge images of VGA, SVGA and XGA
- Grey balance adjustment capability
- Image spooling (2 frame memories)



2-split image print mode
(UP-20/UP-21MD)



4-split image print mode
(UP-20/UP-21MD)



Wired / wireless remote control RM-5500



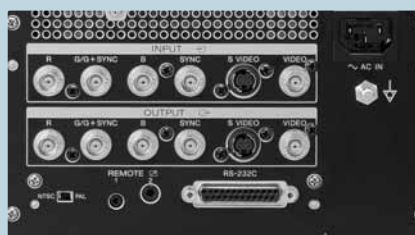
Remote control RM-91

UP-20/21MD/D23MD Specifications

	UP-20	UP-21MD	UP-D23MD
Printing Method	Dye sublimation printing		
Resolution	403 dpi (1664 dots)		
Gradations	256 gradations for Yellow, Magenta, Cyan, over 16.7 million colours per dot		
Effective Print Pixels	S Size 1,524 x 1,176 dots L Size 2,032 x 1,458 dots		S Size 1,520 x 1,144 dots L Size 2,000 x 1,520 dots
Print Area	S Size Full 95.8 x 72.7 mm 2 Splits 68.3 x 47.7 mm L Size 126.9 x 91.9 mm 2 Splits 87.7 x 63.4 mm 4 Splits 63.5 x 45.9 mm		S Size 95.8 x 72.1 mm L Size 126 x 95.76 mm
Media Size	A6 S Size 100 x 90 mm (4 x 3 5/8 inches) A6 L Size 144 x 100 mm (5 3/4 x 4 inches)		
Printing Time (High-speed mode)	UPC-21S: approx. 17 seconds UPC-21L: approx. 25 seconds		UPC-21S: approx. 19 seconds UPC-21L: approx. 29 seconds
Memory	4 Frame memories		18 Mb (2 Frame memories)
Control Terminal	Remote 1 (special mini) for optional RM-5500 Remote 2 (stereo mini) for optional RM-91 and FS-20 RS-232C interface port (D-sub-pin)		USB interface port (version 1.1)
Inputs/Outputs	Video, S-Video	Video, S-Video, RGB	—
Media Tray Capacity	L Size tray : Max. 50 sheets S size tray : Max. 80 sheets		
Power Consumption	100 to 120 V: 1.8A, 220 to 240 V: 1.0A		
Power Requirements	AC 100 to 120V, 50/60 Hz, AC 220 to 240, 50/60Hz		
Dimensions	212 (W) x 125 (H) x 395 (D) mm (8 3/8 x 5 x 15 5/8 inches)		
Mass	Approx. 6.5 kg (14lb 5 oz)		
Driver Software	N/A	N/A	Windows® 98/98SE/Me, Windows2000, XP
Safety Standards	UL2601-1, CSA C22.2 No.601.1, EN60601-1		
Supplied Accessories	AC power cord Operation manual Media tray Colour printing pack (10 prints) Thermal head cleaning cartridge		Media tray Thermal head cleaning cartridge, CD-ROM (printer driver, ICC profile, online operation manual) USB Cable
Optional Accessories	UPC-21S Colour print pack (for 240 prints) UPC-21L Colour print pack (for 200 prints) UPA-21SA Slide adaptor RM-5500 Wired/wireless remote control unit RM-91 Remote control unit FS-20 Foot switch		UPC-21S Colour print pack (for 240 prints) UPC-21L Colour print pack (for 200 prints) UPA-21SA Slide adaptor



UP-20 rear panel



UP-21MD rear panel



UP-D23MD rear panel